



Lebanese University.
Faculty of fine arts
& Architecture.
4th year.

Presented by:
Ahmad MINAOUI
Chaza GHAMRAOUI
Julia KATRIB
Rachelle CHEHAYTA
Rouba RIMA
Sana ABDALLAH

Design competition of a public space

Abi Samra, Tripoli, Lebanon



UN HABITAT
FOR A BETTER URBAN FUTURE



Purpose : support the municipality of Tripoli in obtaining an appropriate solution for one of its few remaining public spaces in Abi Samra.

Constraint: sustainable project that's conform to a budget falling between 1,300,000 and 1,600,000 USD. And meeting people expectancy.

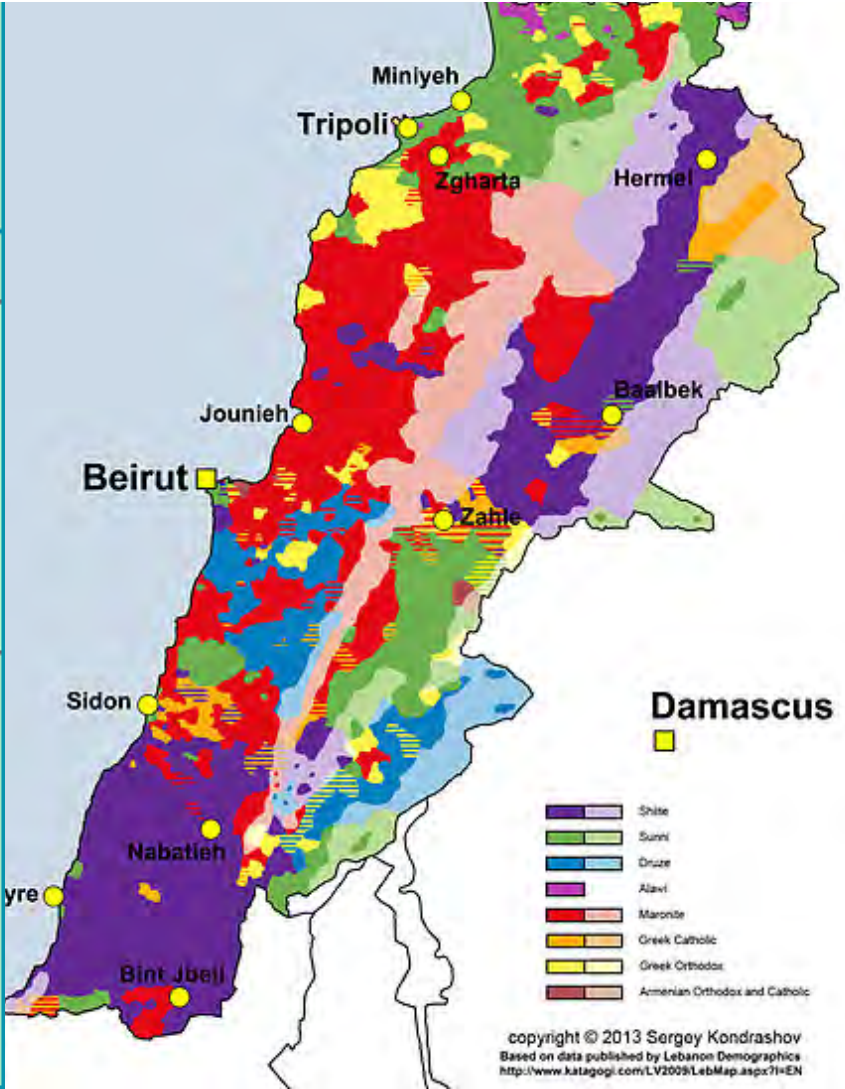
Participants: Architecture students , from 7 universities in north Lebanon ,4th year level (Lebanese University, Beirut Arab University, Manar University of Tripoli, Université Saint-Joseph, University of Cyprus, Université Saint-Esprit Kaslik, Notre Dame University)

Jury: members from various background : architect, landscape designer, urban planner and a municipality member...



Site Analysis

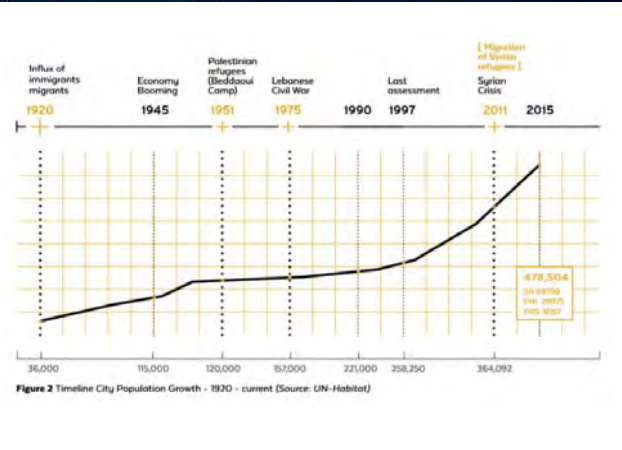
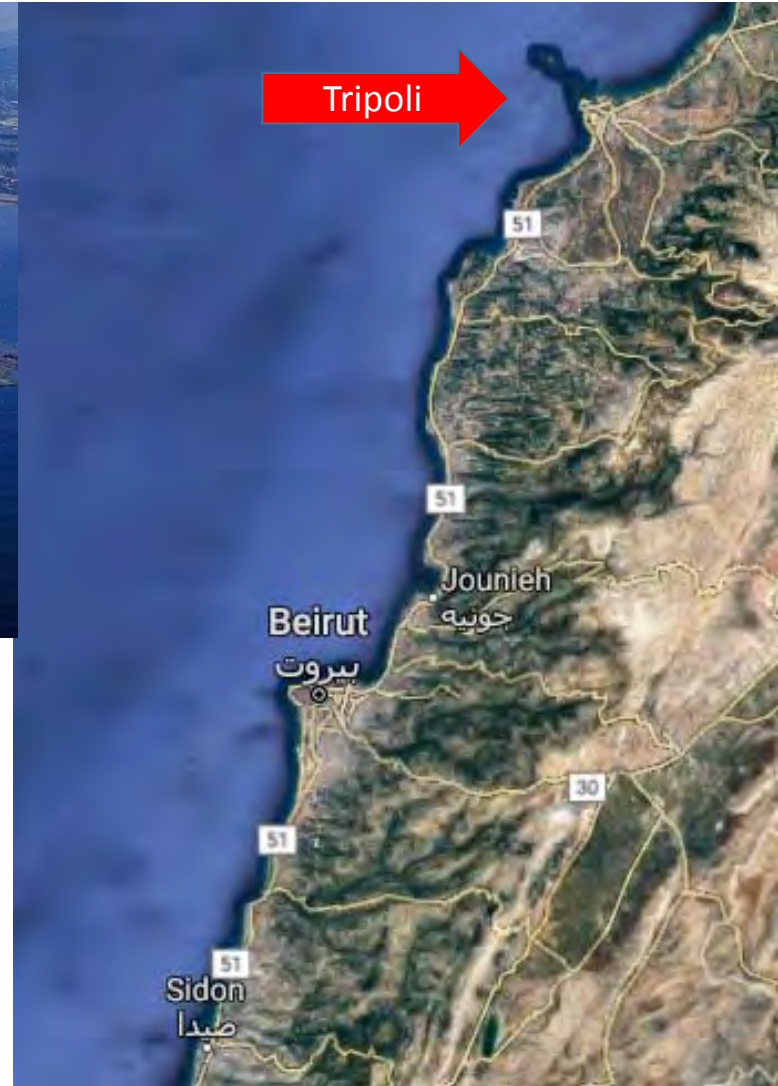
Lebanon, a Multi-cultural small country



Olive trees repartition in the Mediterranean



Tripoli, the second biggest city in Lebanon.

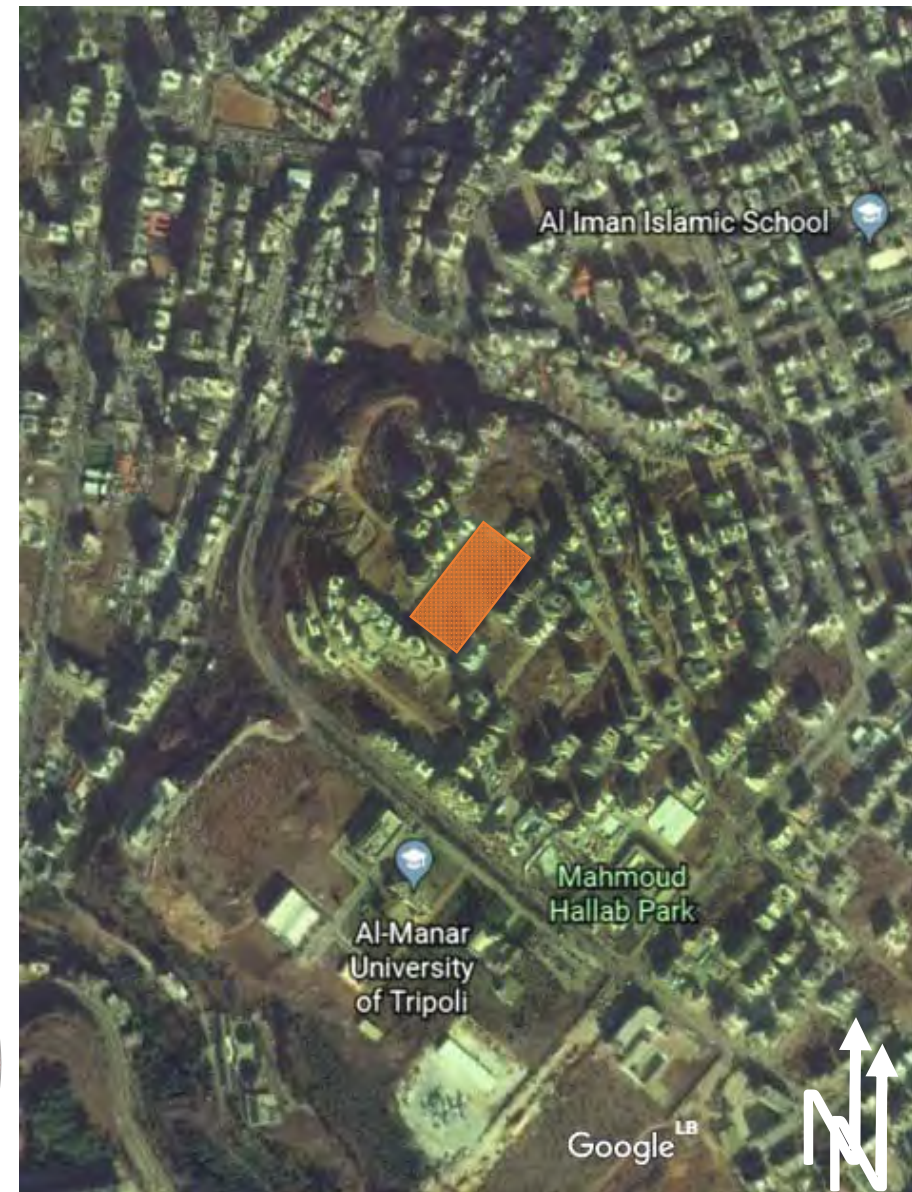


Current situation of public spaces in Tripoli

- Privatization of public spaces
- Lack of spaces dedicated for public benefit
- Plurality of actors and policies.
- Lack of maintenance due to its high cost.
- Public spaces are not used at night due to the taboo: being relatively dangerous

Governance

- Maintain by the municipality.
- Rented for private investors to maintain it.



Choice of site:

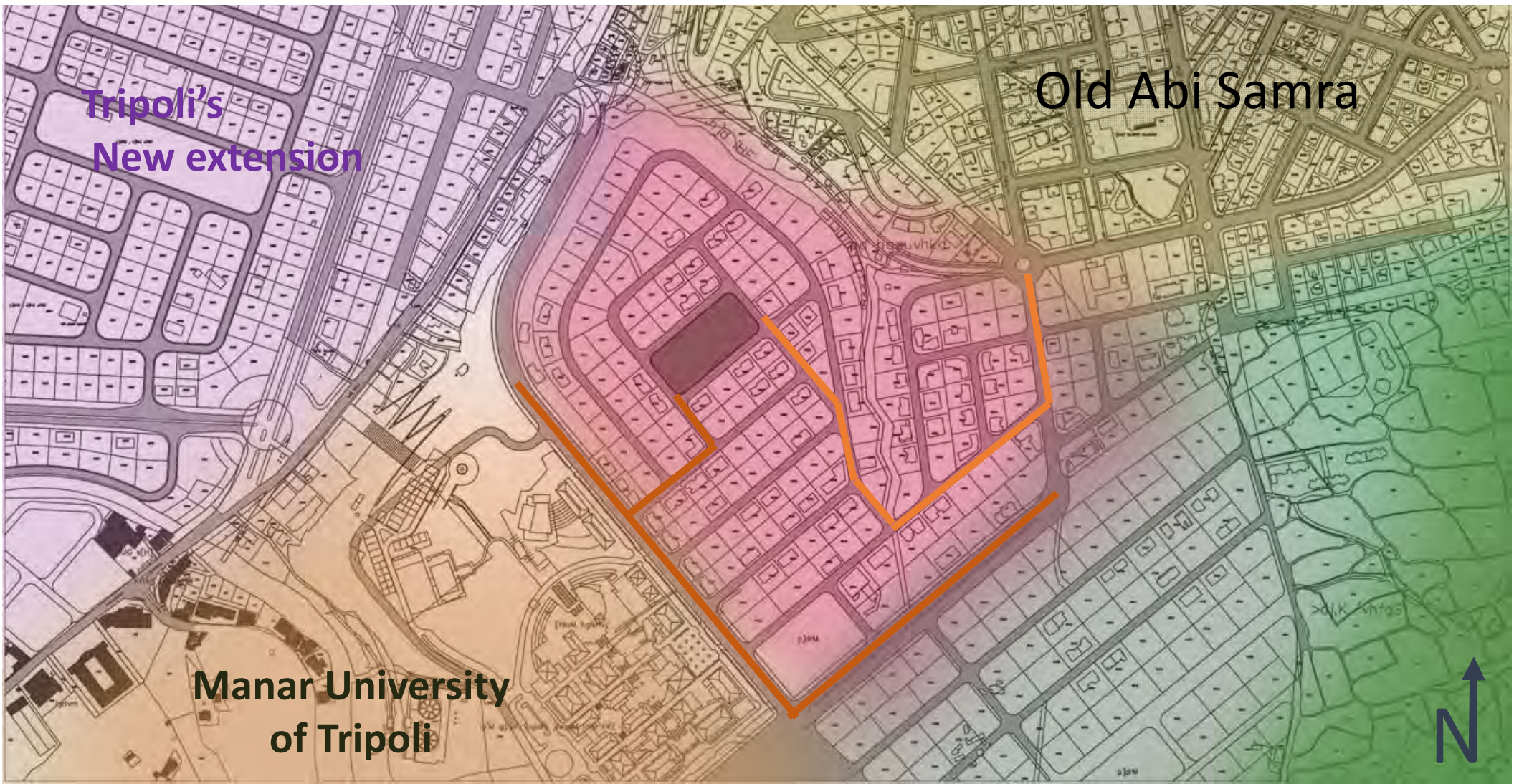
- 1- Lack of public spaces in old city.
- 2- Near the old city, in a New Extension.
- 3- too many universities and schools..

Situation





Accessibility

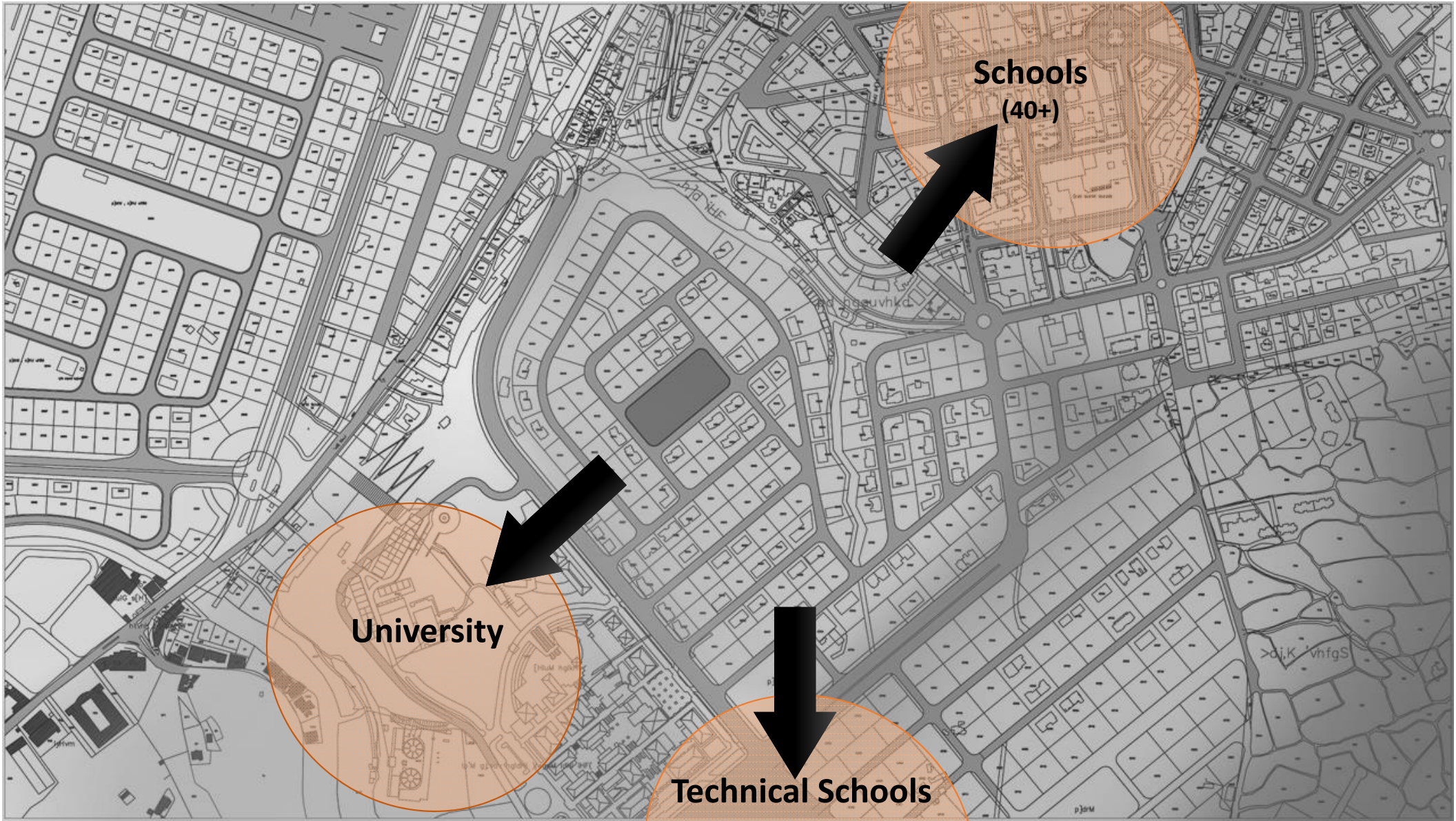


Tripoli's
New extension

Old Abi Samra

Manar University
of Tripoli





**Schools
(40+)**

University

Technical Schools

Site views:





Cities have the capability of providing something for everybody, only because, and only when, they are created by everybody.

-Jane Jacobs-

OBSERVATION

Lack of public spaces for children to play in





Interviewed Samples



Age of Interviewed Samples

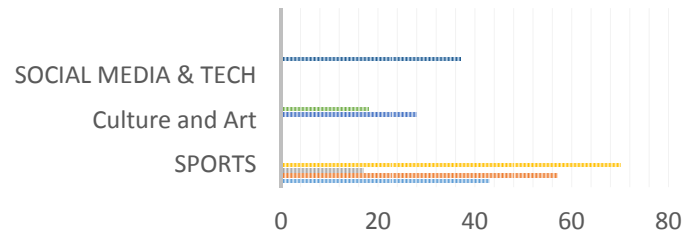
AGE (YEAR)

LESS THAN 18 18-25 25-60 60+



Hobbies and Activities

SOCIAL MEDIA and tech DRAWING
 READING WALKING
 BASKETBALL BIKING
 FOOTBALL



Age:.....

Gender:.....

1-What are the activities you prefer to do in your free time:

2-Do you usually visit public spaces in Abou Samra?

3-What means of transportation do you use to travel inside Abou Samra?

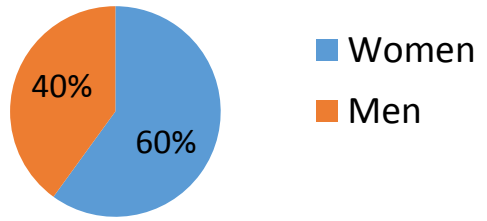
4-What time do you prefer to go to public spaces? And till what hour do you tend stay?

5-Do you think public spaces should include Lebanese and Syrians or Lebanese only?

6-What are the activities you want to practice and are lacking in Abou Samra?

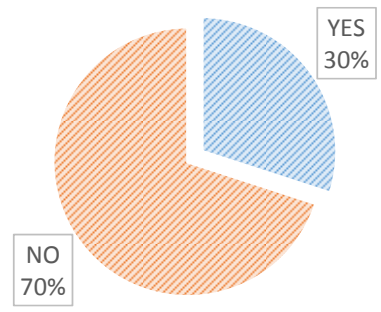
- Rambling and kids' activities
- Reading
- Cultural activities (Drawing, Dancing, Photography, Sculpture)
- Sports
- Agricultural activities
- Other:.....

Gender

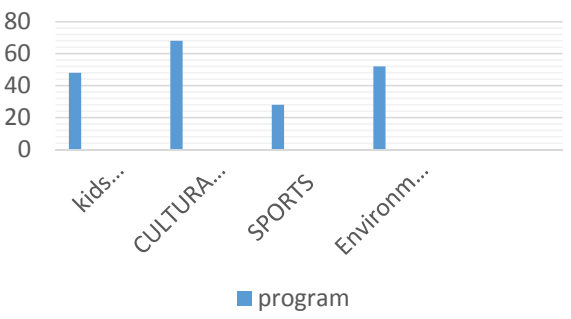


Do you frequently go to public Places in Abu Samra?

YES NO



Activities that requires leaving Abu Samra





Regular cleaning campaigns take place in Abi Samra during summertime





Cleaning campaigns,
In the local public gardens



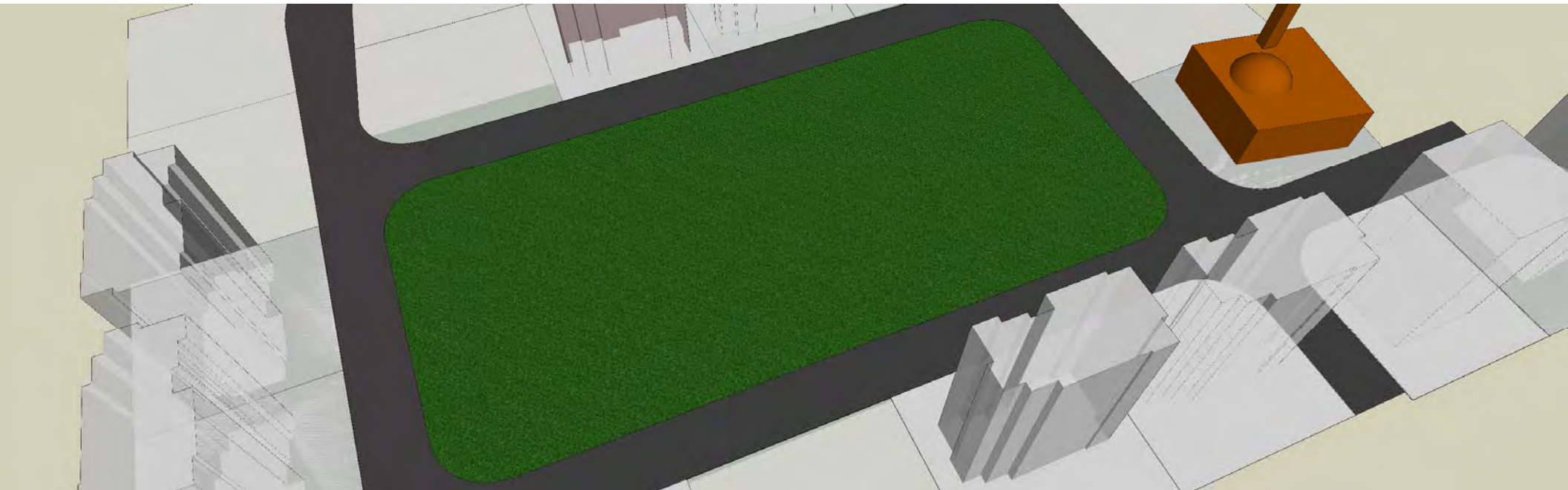
Our Strategy : Offering Opportunities For impact

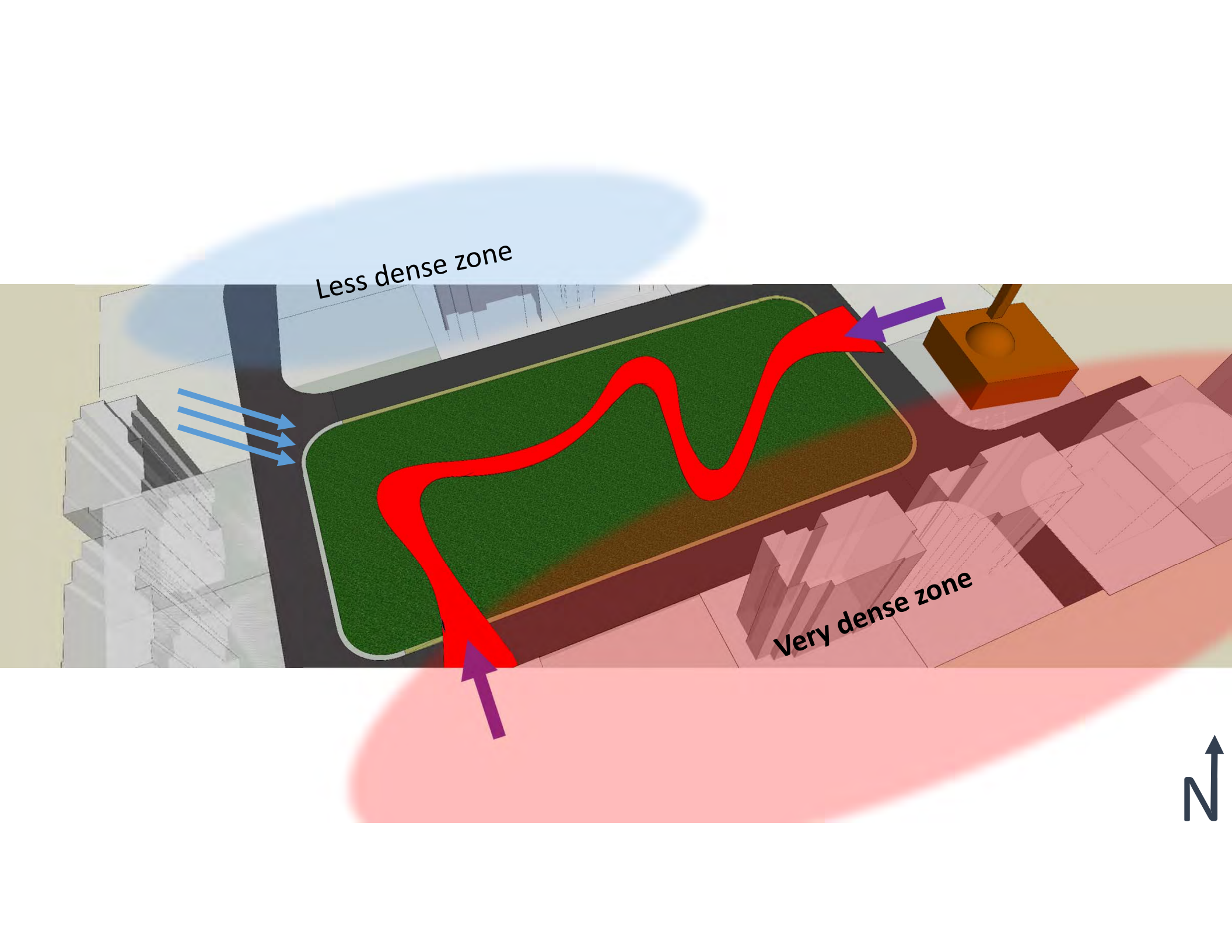
Considering ourselves as:

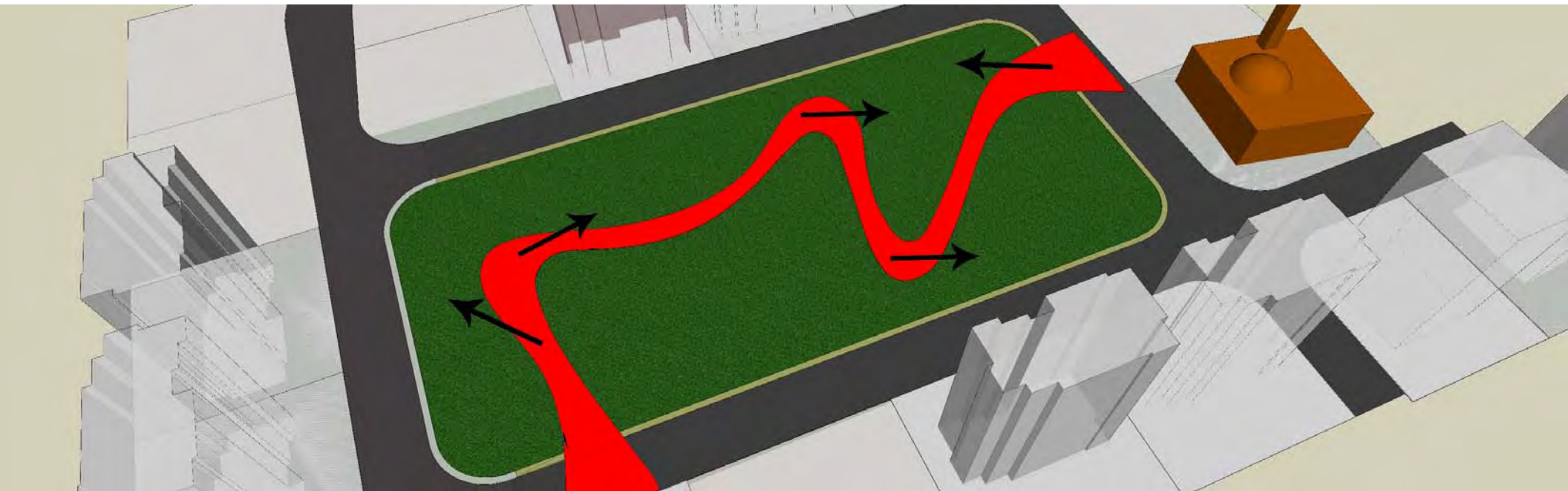
- Expert Citizen
- Story tellers
- Translators

Our aim is not to impose architecture, considering architecture as an emotional relationship and a peace of crafted Art.

Design Process

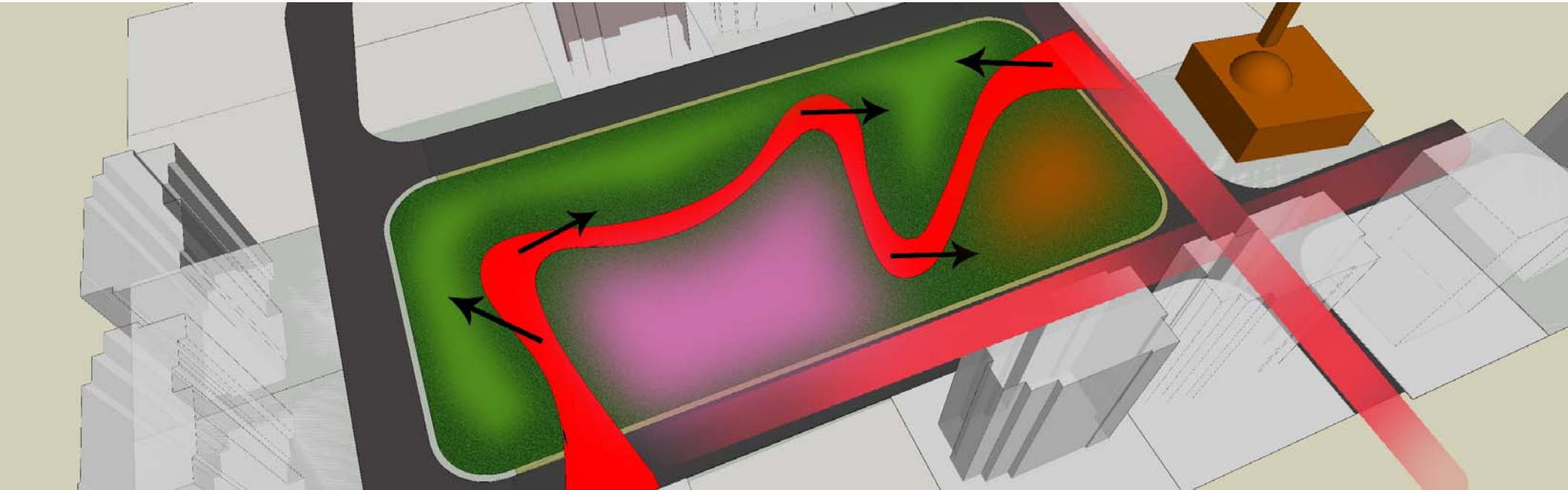






Olive promenade

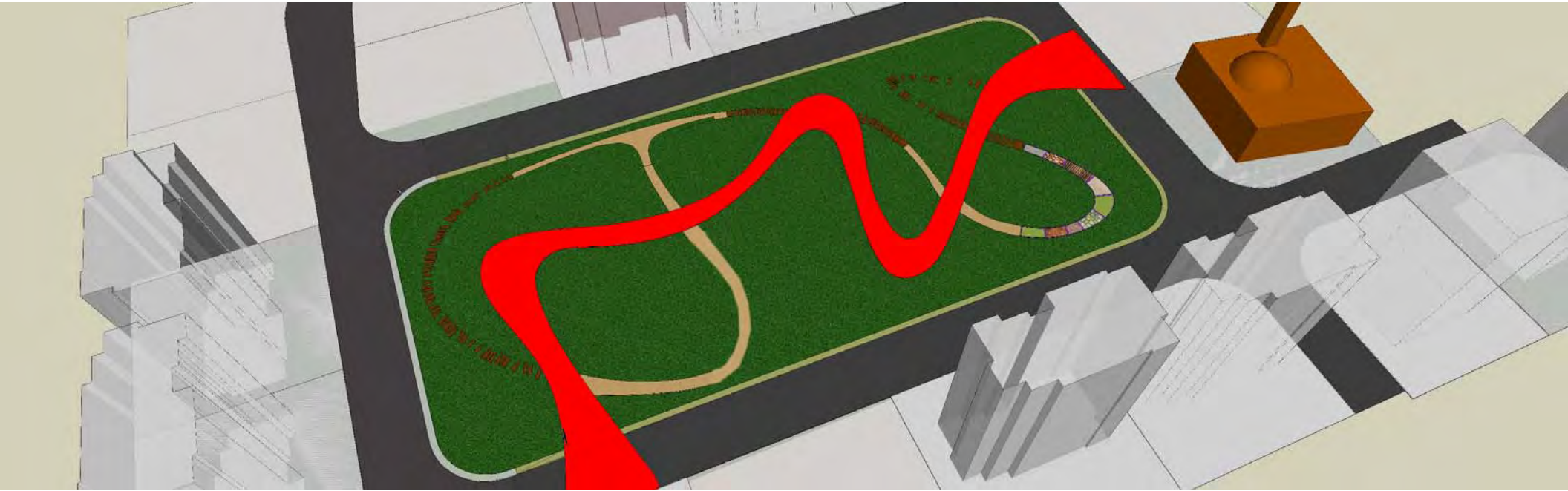
Preserving the collective memory of Abi Samra's residents, this promenade stays a surviving green spot facing the urban expansion.

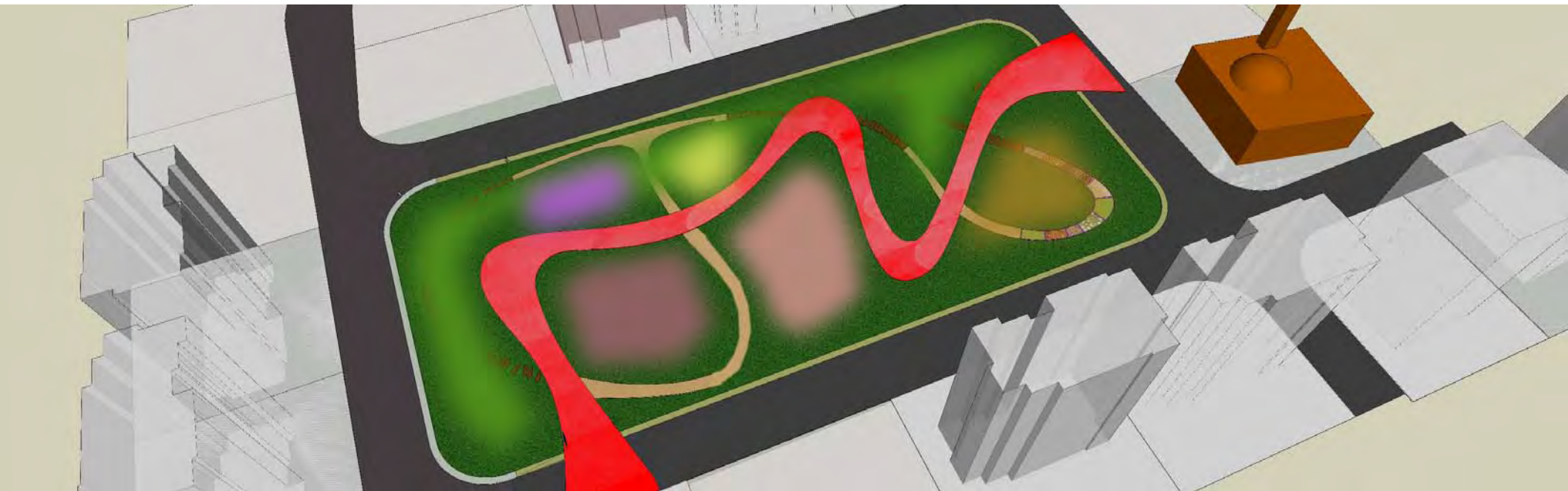


Lavish Land

Fruitful trees decorate this area boosting human's seeing and smelling sensations





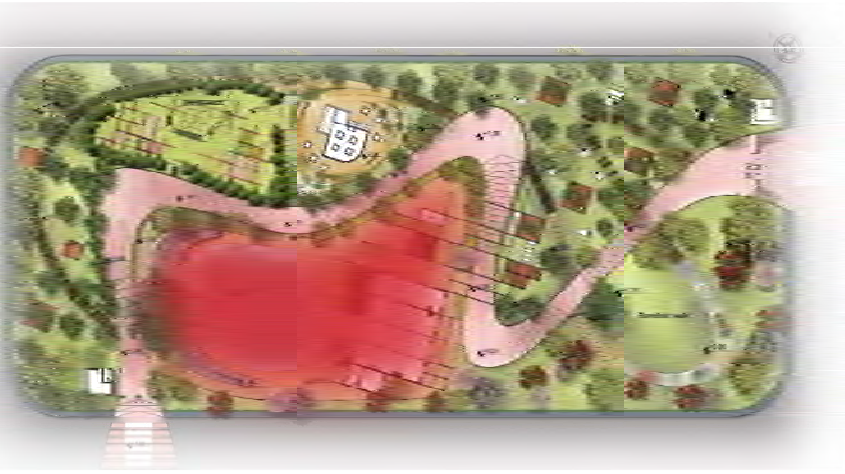




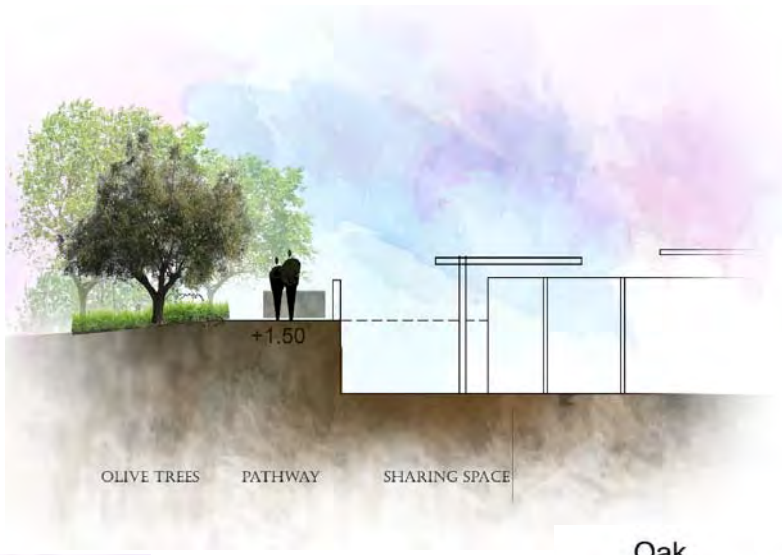




Zoning



Communion Space



It's the most important part of the park. Visitors get to know each other, interact and create. Functions can be used separately and can be considered a whole entity at the same time.



OLIVE TREES PATHWAY AMPHITHEATER



The Chinese Art of REFLEXOLOGY

Reflexology is the therapeutic art of working pressure points on the feet, hands, and ears that are thought to correspond to different parts of the body.

- May date back as far as 4,000 years
- According to traditional healers, reflexology restores the body's equilibrium, encourages healing, and strengthens the body
- Points on the feet can be activated by walking on mosaic paths

Benefits of Reflexology Supported by Research:

<ul style="list-style-type: none"> Head/Brain Tooth/Gum Eye Ear Trapezius Armpit Lung/Chest Arm Shoulder Liver Gall Bladder Kidney Hip Joint Ascending Colon Appendix Sciatic Nerve Knee 	<ul style="list-style-type: none"> Pituitary Tarsal Nose Neck Cervical Spine Thyroid/Parathyroid Esophagus Solar Plexus Diaphragm Stomach Adrenals Pancreas Duodenum Lumbar Vertebrae Ureter Bladder Rectum Sacrum Lower Back/Crural Area 	<ul style="list-style-type: none"> Head/Brain Tooth/Gum Eye Ear Trapezius Armpit Lung/Chest Heart Arm Shoulder Liver Spleen Elbow Kidney Hip Joint Descending Colon Small Intestine Sciatic Nerve Knee
---	--	---

Reduces pain

Enhances relaxation and sleep

Reduces anxiety and depression

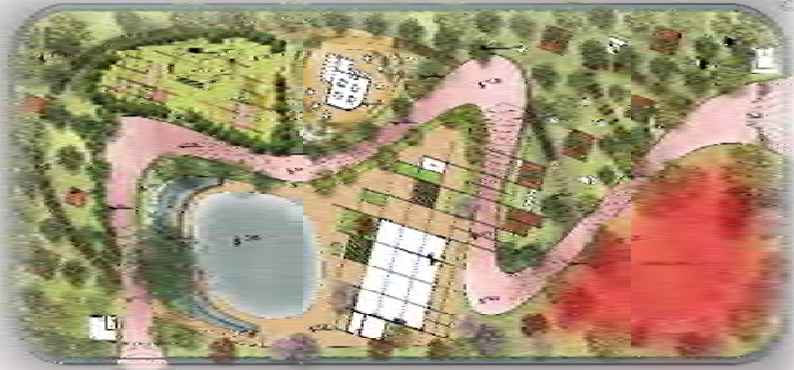
Increases well-being for people with cancer

Reduces blood pressure

chinesefootreflexology.com • reflexology-uk.net • fallwellab.net
handsonfeet.com • telegraph.co.uk • mayoclinic.org • sciencedaily.com

Spiritual Simulation; Barefoot Walk



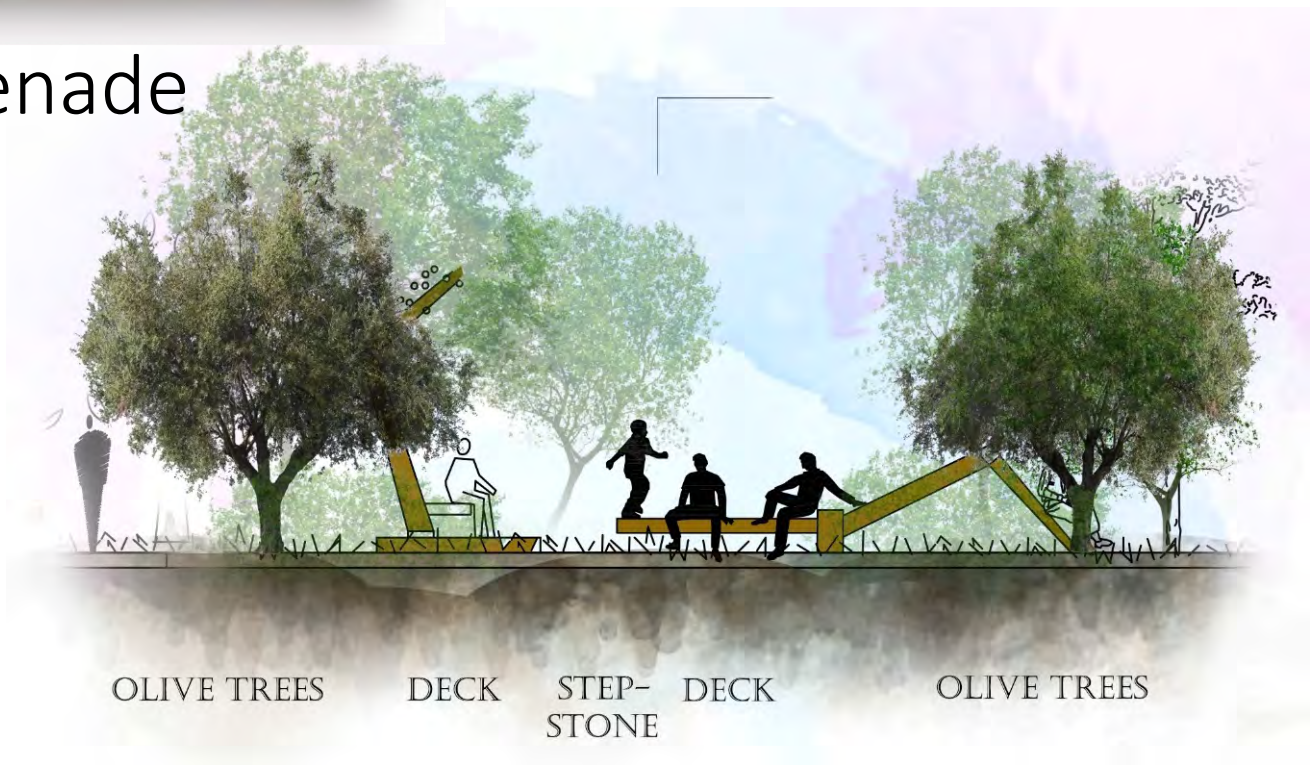


Spiritual Simulation; Green Lawn





Olive Promenade



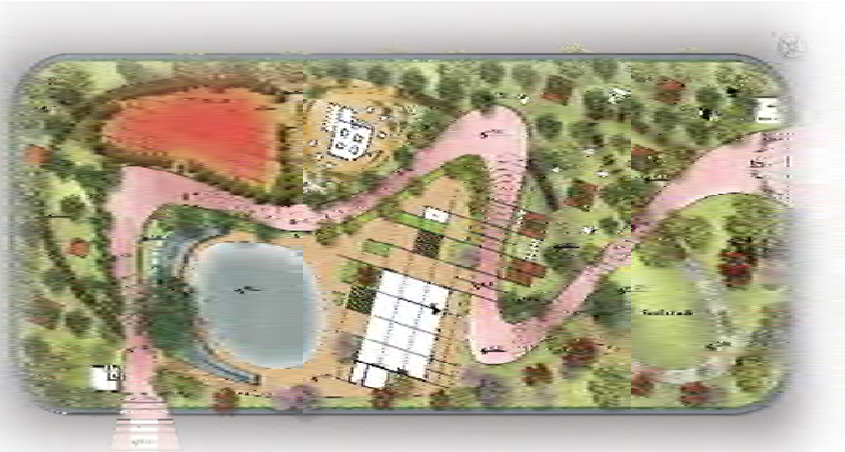
OLIVE TREES

DECK

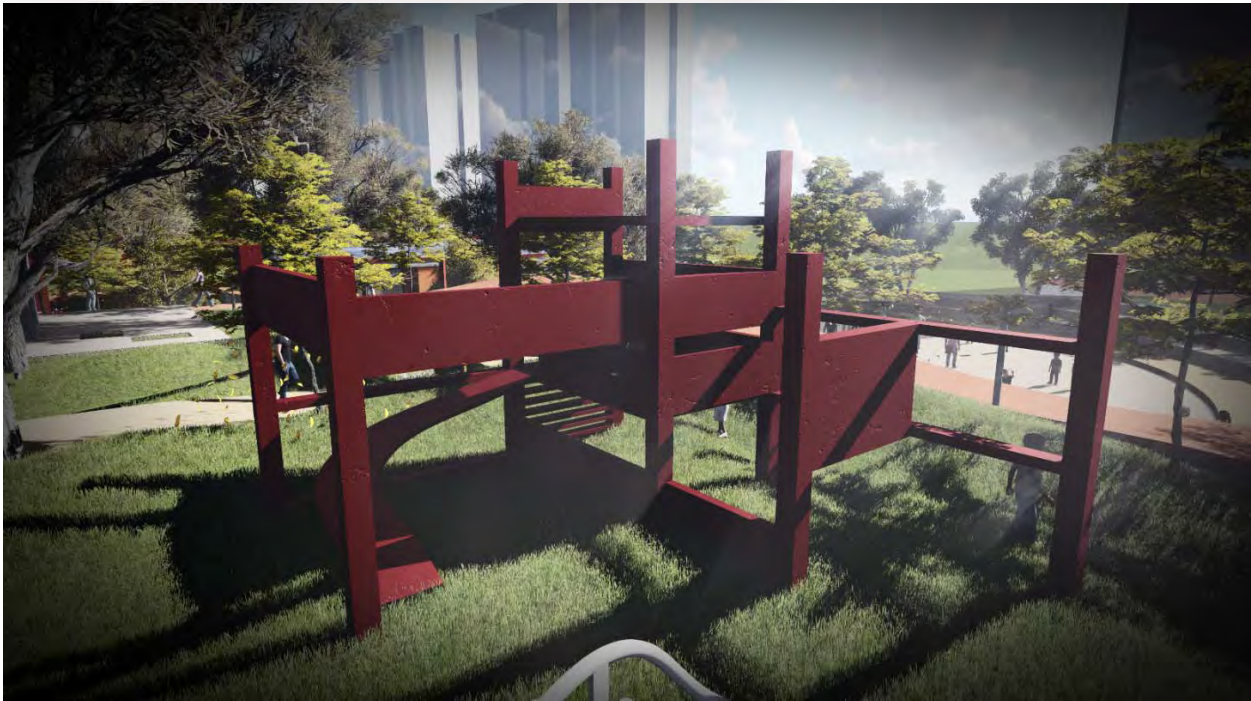
STEP-STONE

DECK

OLIVE TREES

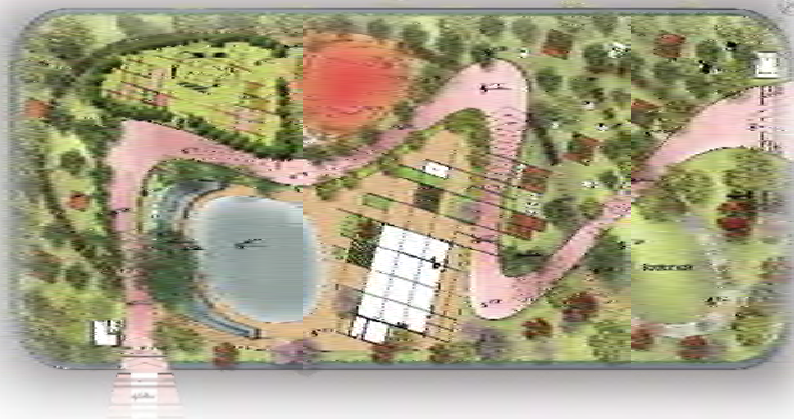


Jungle Fever



A stylization of a jungle is reformed in this area using undefined structures so that kids create their own games every day.

Multiple species of crops are grown near the kids area so that they interact with nature.

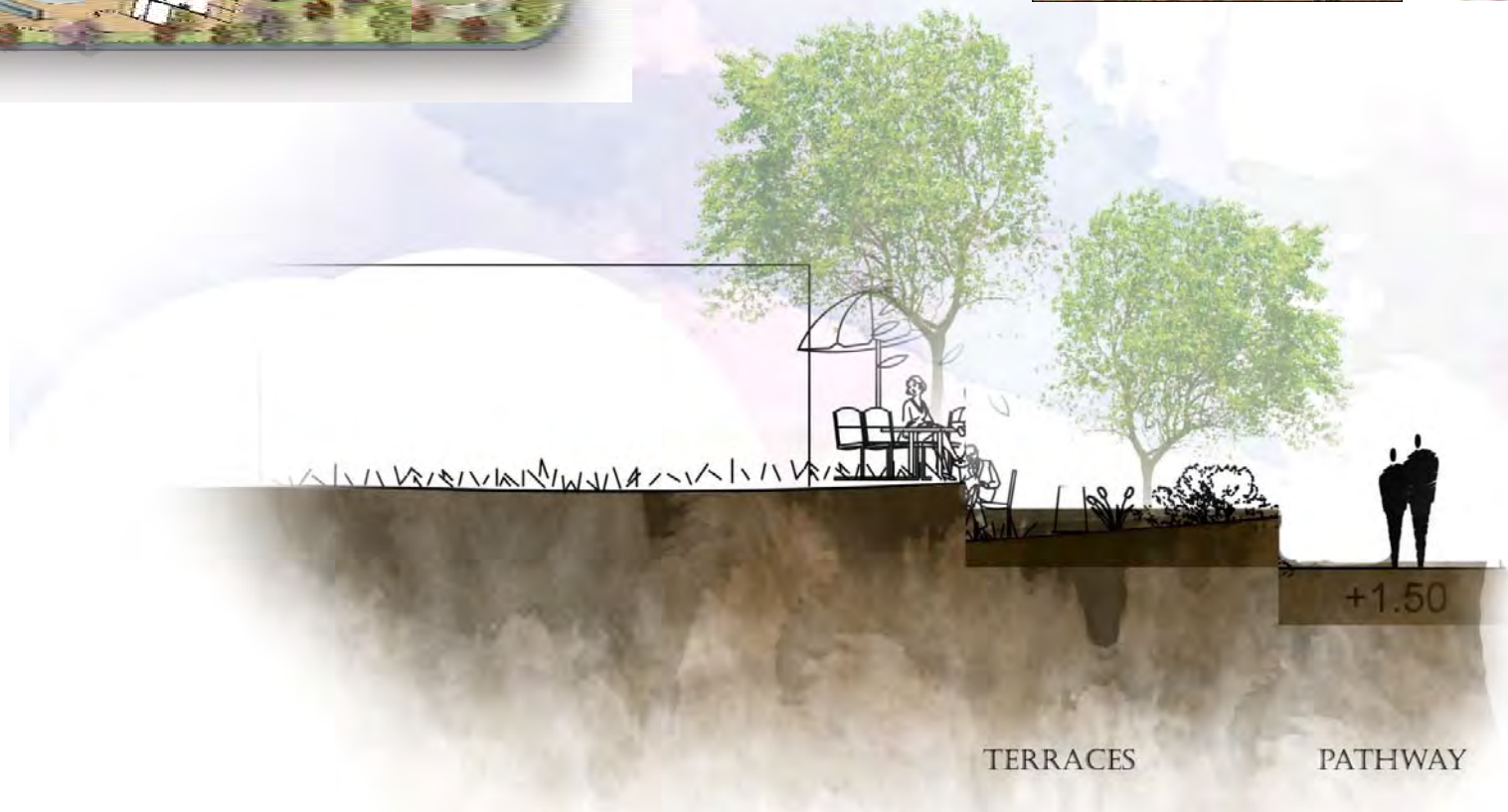


Cafeteria

Eucalyptus



Olive



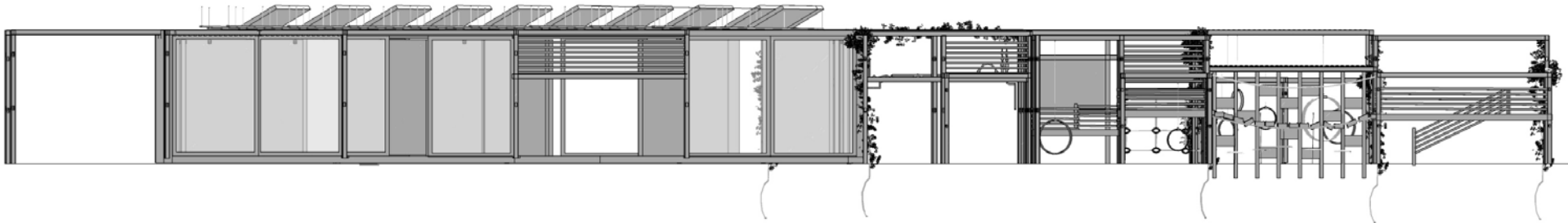
Architectural “Folies”

Multipurpose room

Atop “Folie”

Jungle Fever

Cafeteria

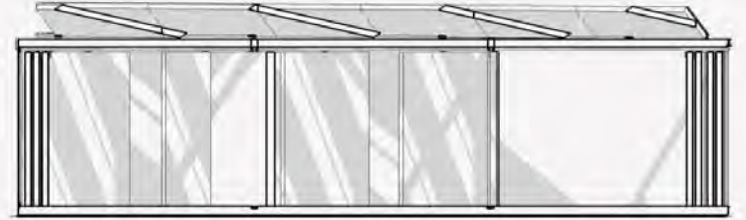


North-East Elevation

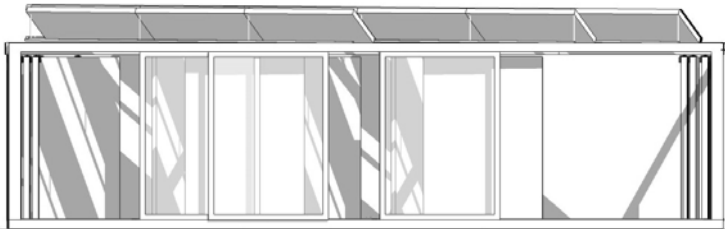
Multi-Purpose Room



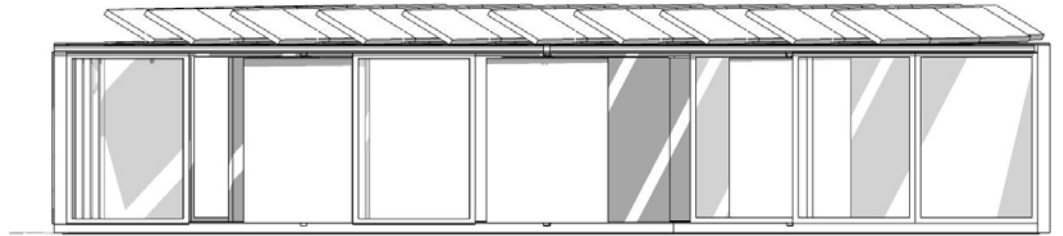
North-East Elevation



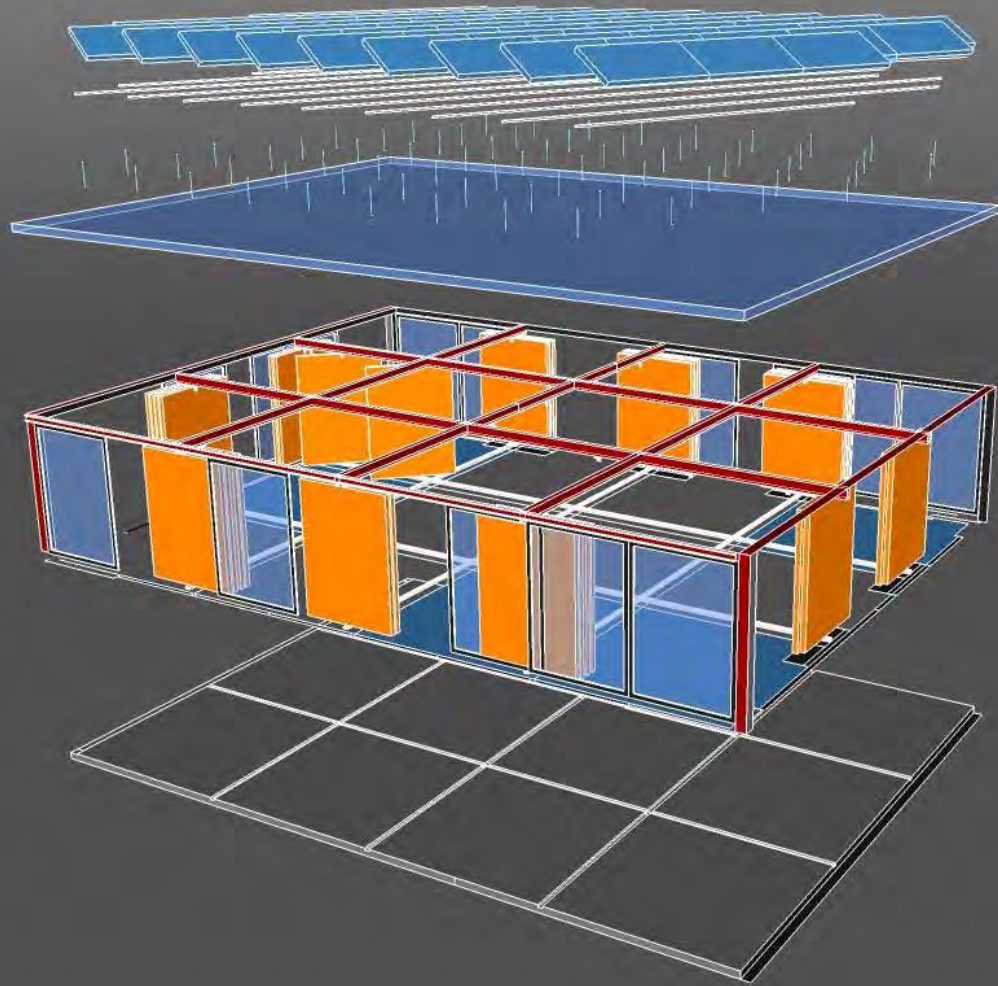
North-West Elevation

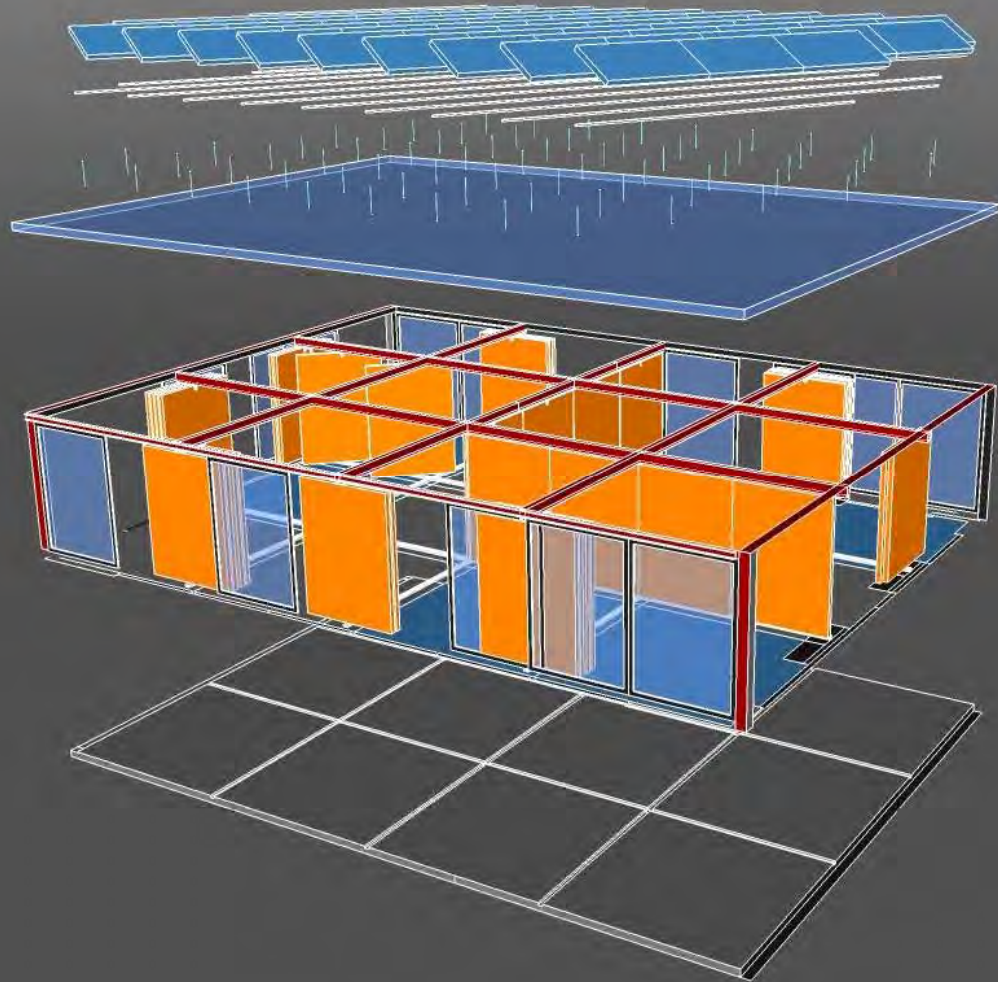


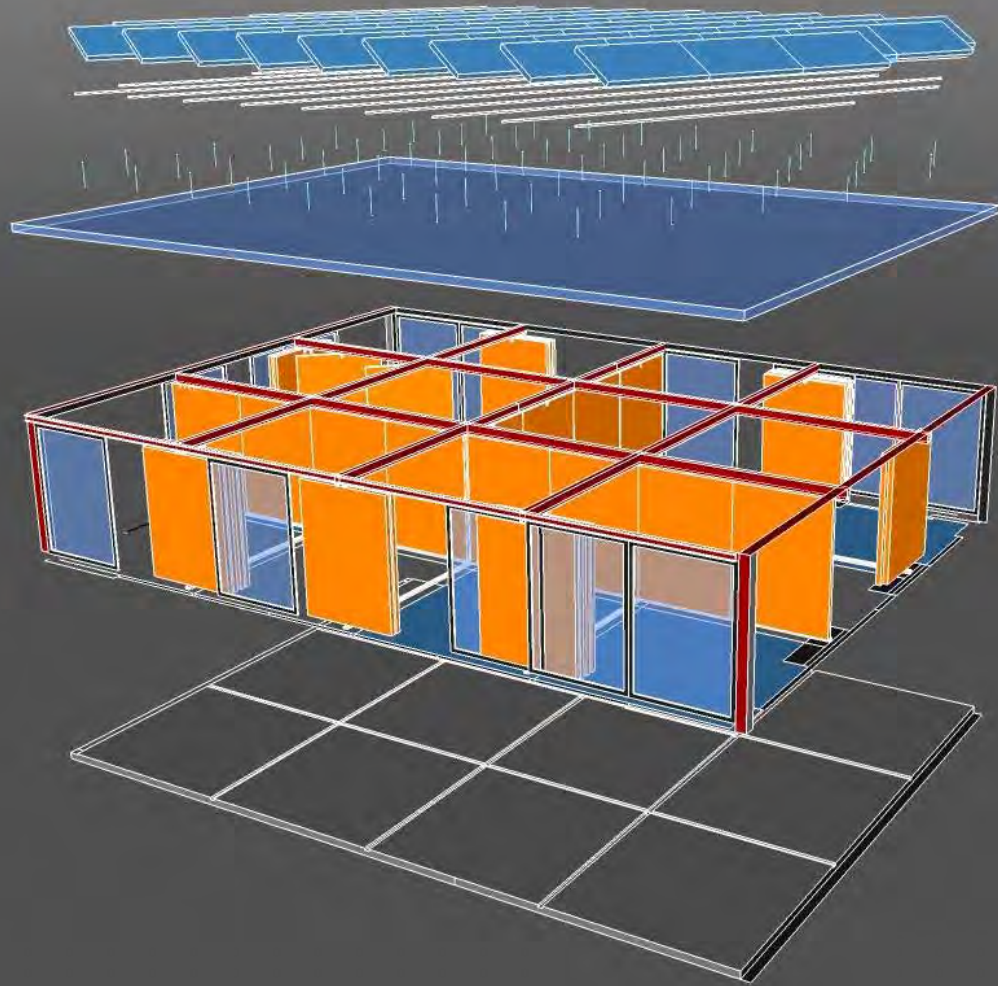
South-East Elevation

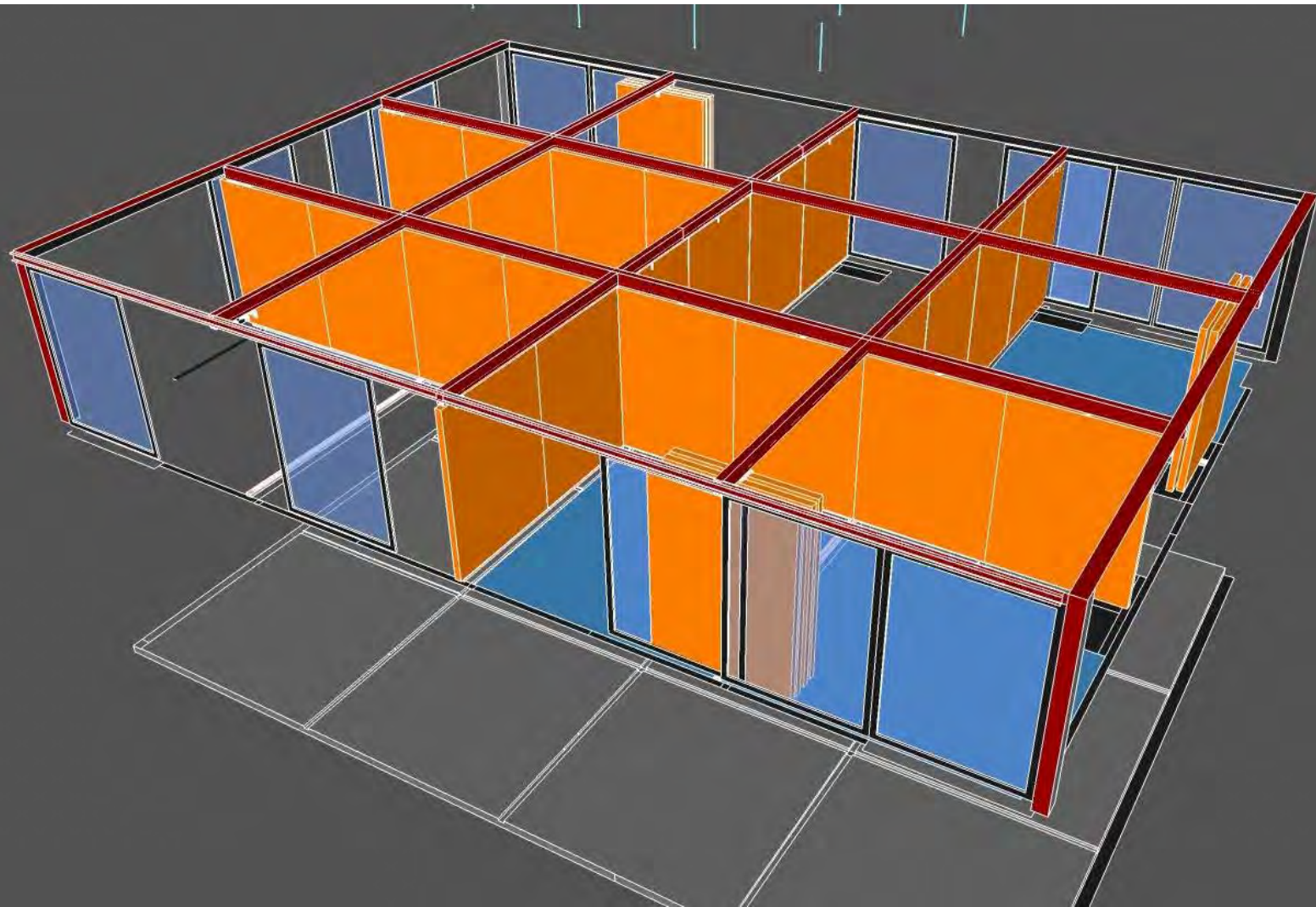


South-West Elevation



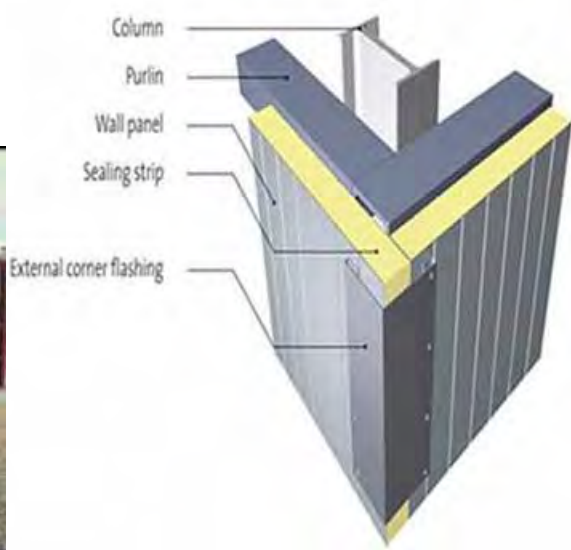
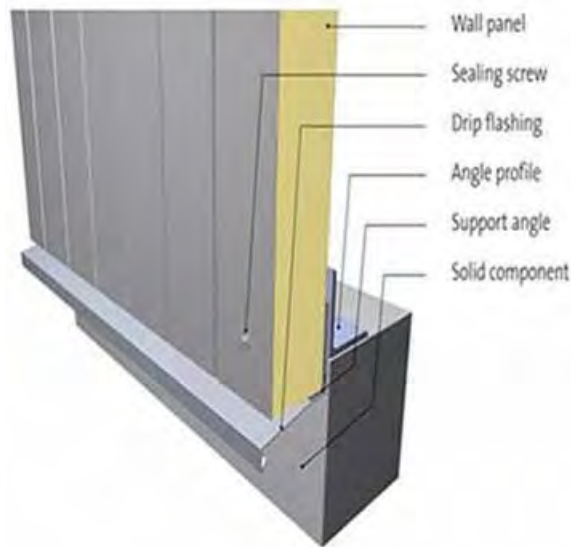
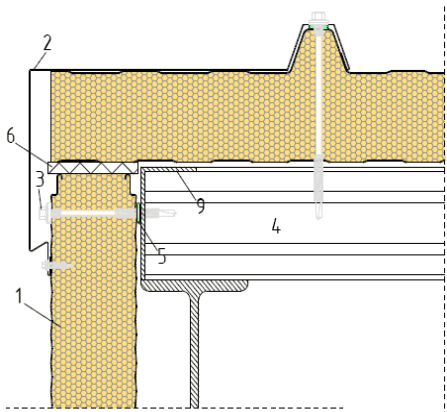






SANDWICH PANEL SPA E FOR EXTERNAL WALL

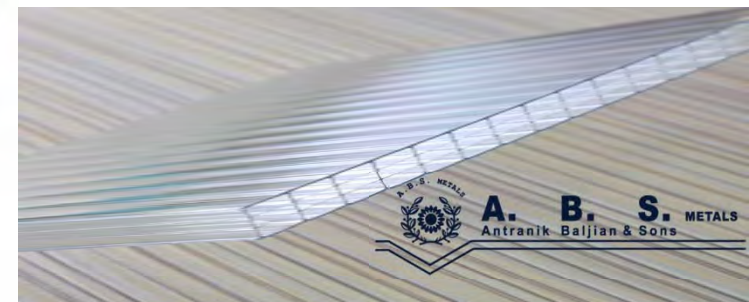
- Features:
- Non-combustible,
 - Absorbs noise (structural mineral wool core)
 - Excellent thermal insulation
 - Fire-safe.



PVC

FEATURES

- Superior insulating material
- Safety
- Durability
- Design flexibility
- Economy
- Light and Energy Transmission
- Prolonged sun exposure.
- UV protection.
- Easy to install and clean
- Warranty against excessive yellowing, loss of light transmission.
- High heat resistance and flame retardant





Multi-functional structures



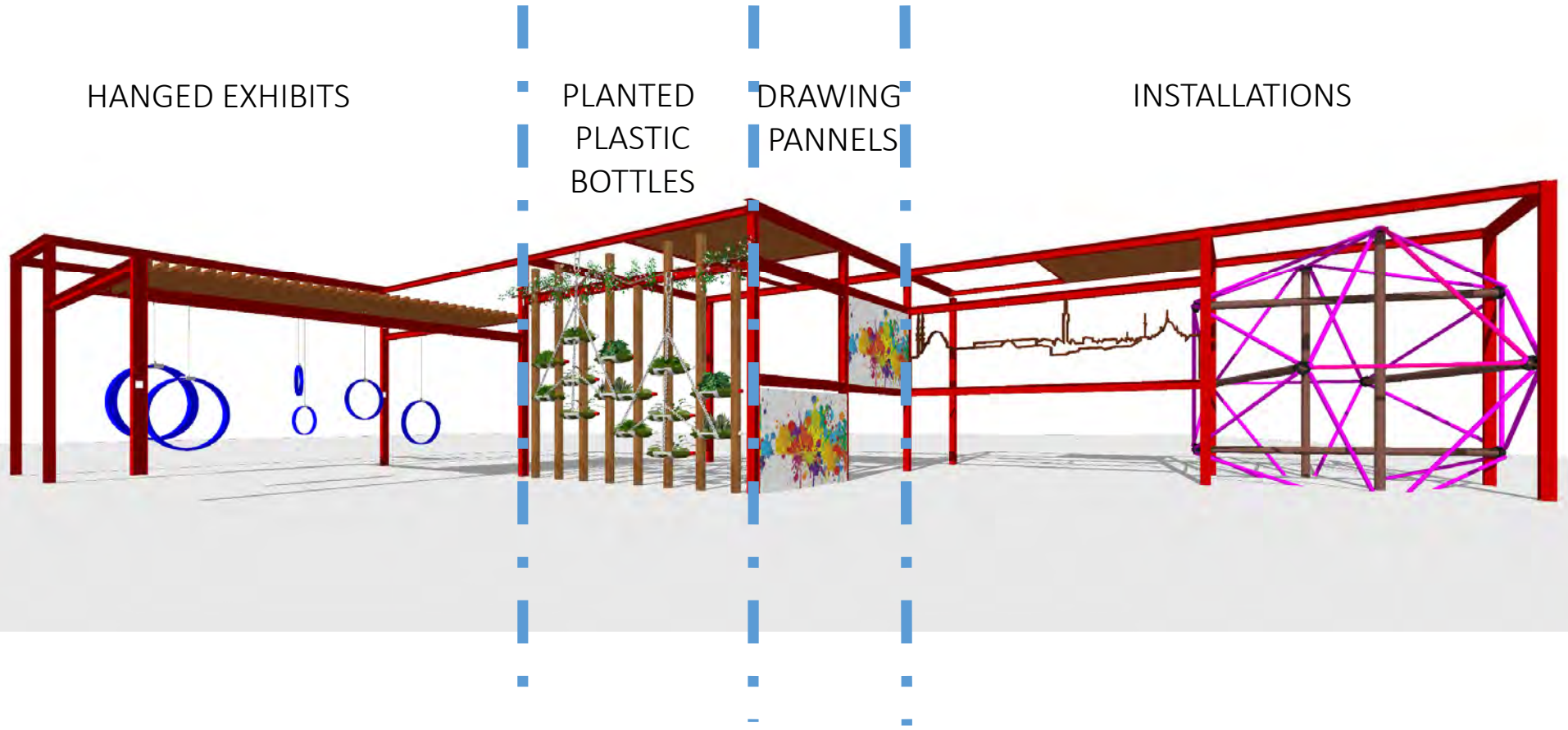
Multi-functional structures

HANGED EXHIBITS

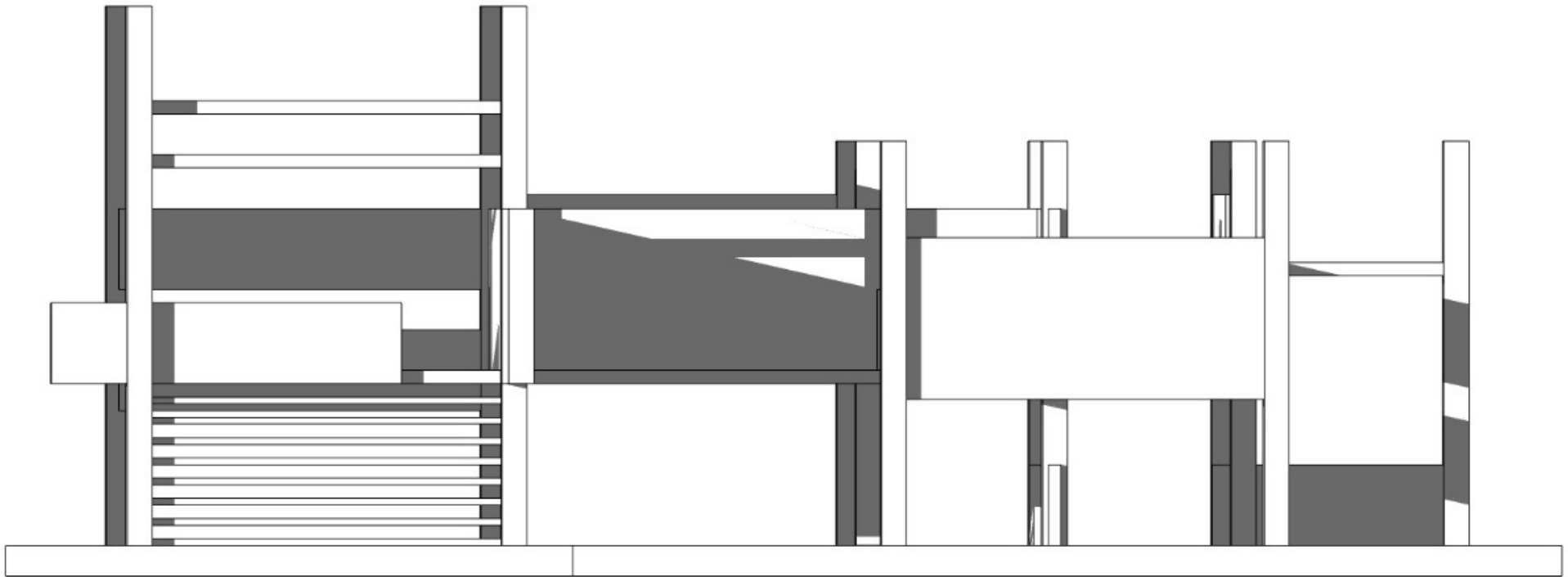
PLANTED
PLASTIC
BOTTLES

DRAWING
PANNELS

INSTALLATIONS



Jungle Fever

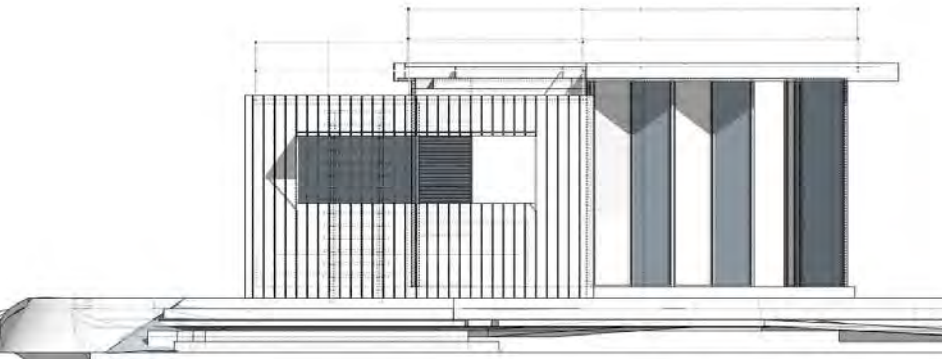


South-West Elevation

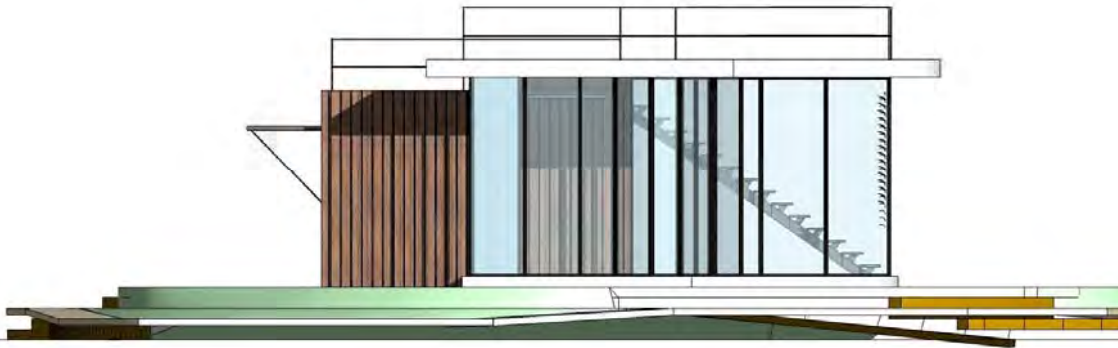
Atop "Folie"



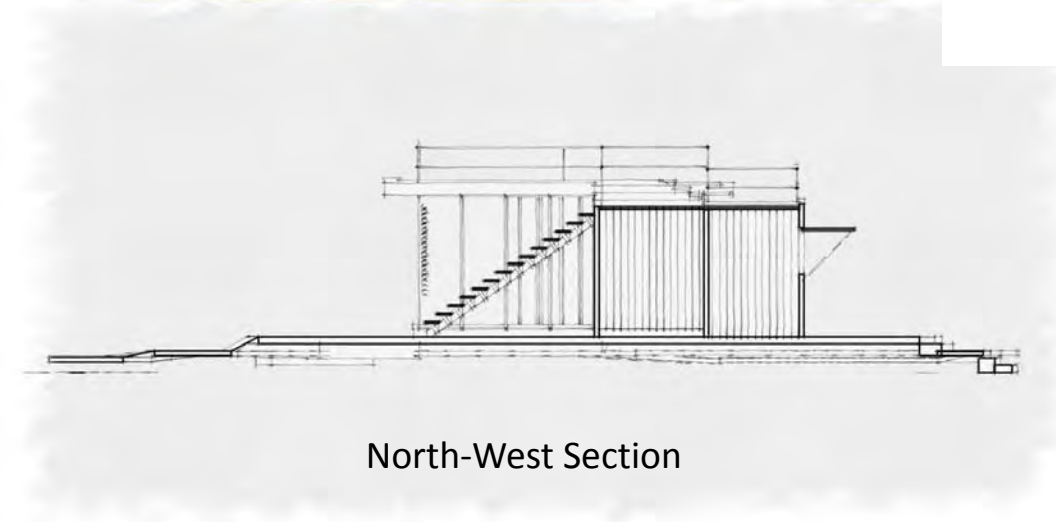
Cafeteria



South-West Elevation



South-East Elevation



North-West Section



Ô-live's Sustainability

1-Ecology and Landscape: Wild and native plants

2-PV System

3-Rain water Collection

Water is a valuable resource that's often wasted.

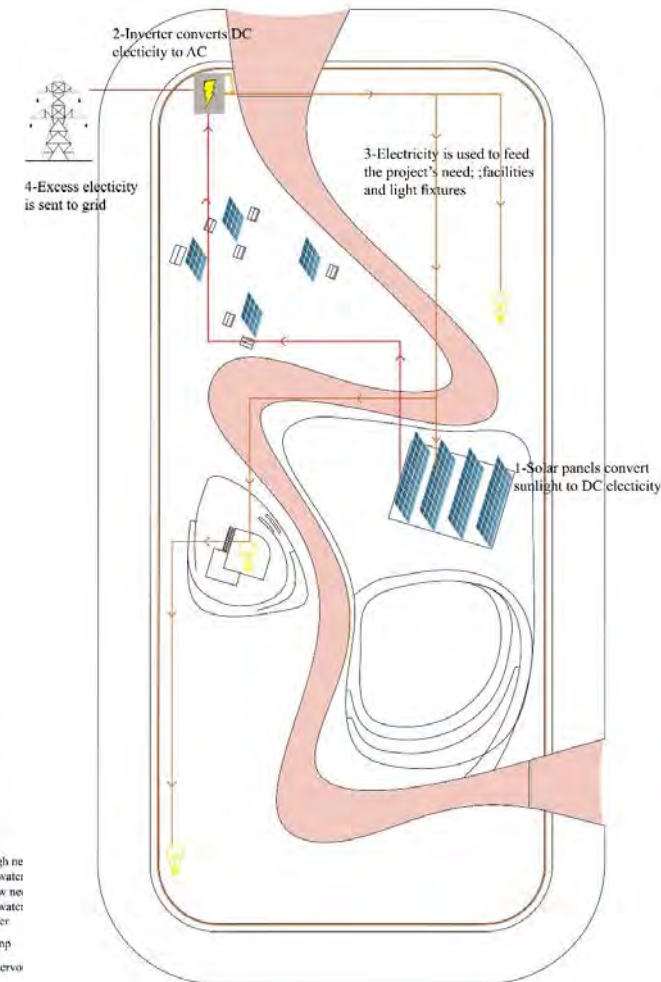
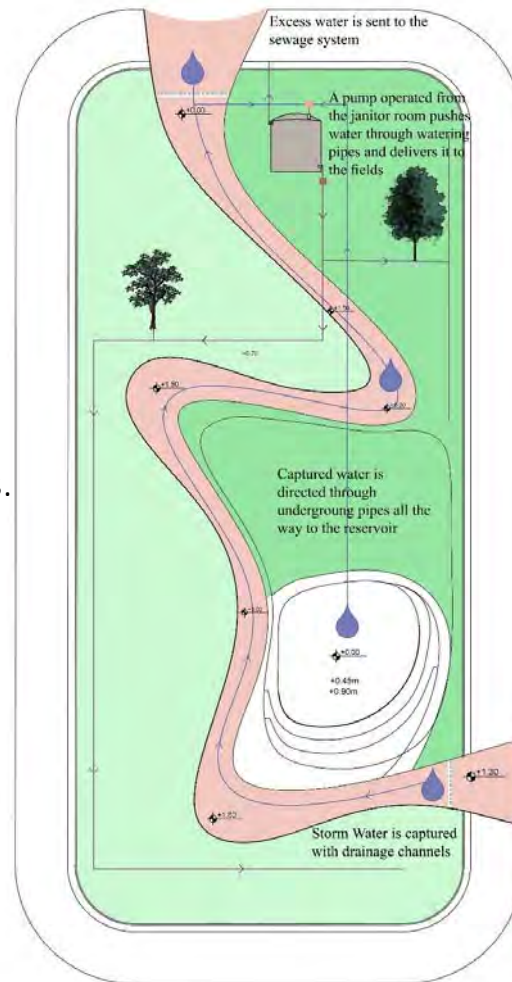
Set up a system to capture water and reuse it using cisterns, underground tanks or rain barrels.

4-Recycled Materials

5-Trash recycling

6-Green Education

7-Long Term Visions



Additional Lighting

More light creates an increased feeling of safety in an environment, making it a more welcoming place, especially for families, in the evenings, which increase activity during these hours



Maintenance and administration

- 1-The municipality organizes the renting process.
- 2-NGOs and beneficiaries organize the events schedule.
- 3- Lavajete will collect trashes at morning and night.
- 4- Collaboration between municipality and recycling factories to profit from trashes.

Ô-live's Financial Resources

1-Cafeteria

2-Spaces For Rent

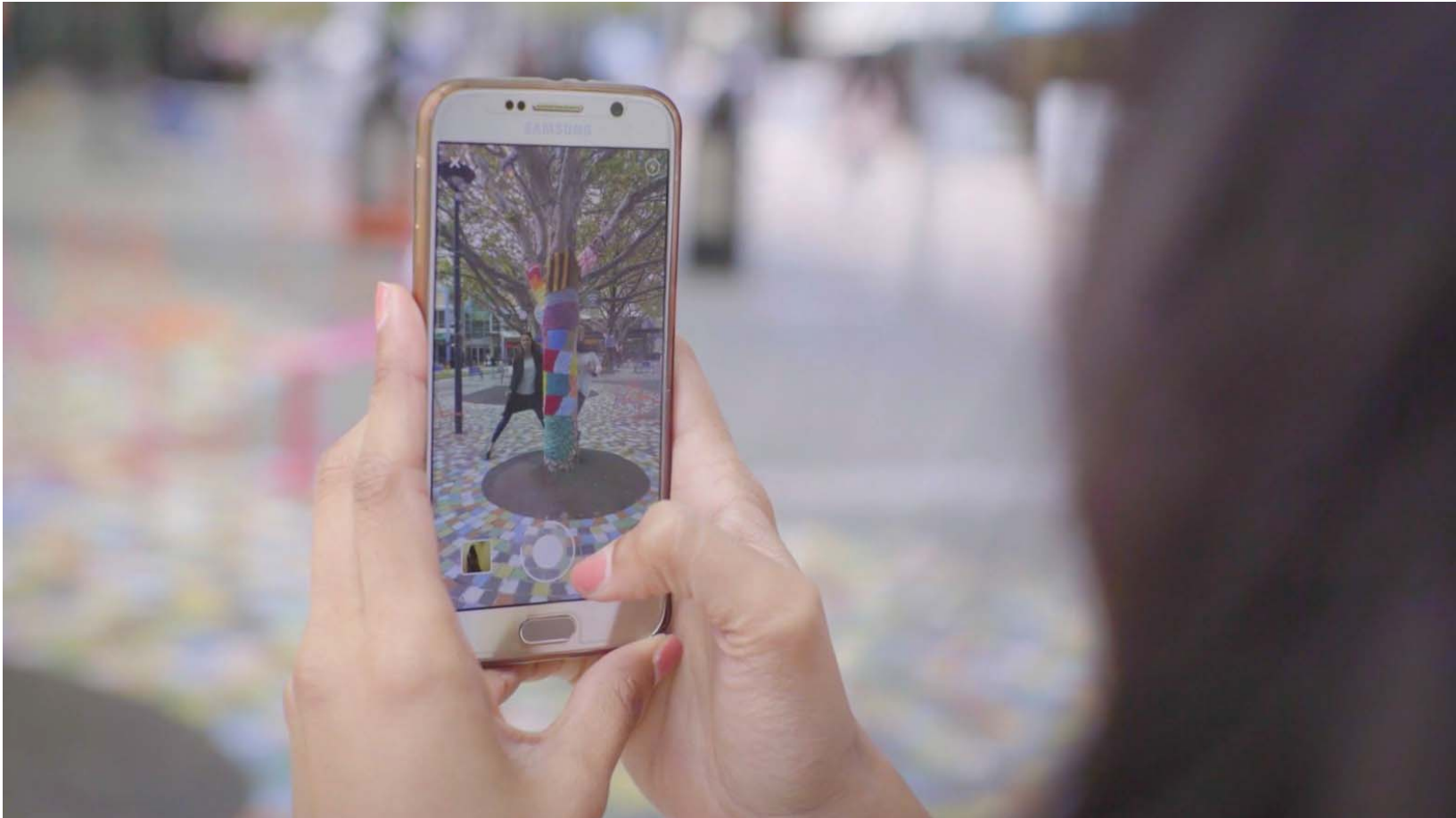
3-Events and Concerts

4-Food Village (Or weekly organized markets)

5-Temporary Expositions

The project can be built through phases :

- Landscaping + (Cafeteria & Kids area).
- Multifunctional structures + Multipurpose room.
- Fence & finishing.



Digital Elements

“We didn’t actively promote the park to the community or stage a launch, we simply built it and people came ”

Free wifi - previously experimented at the Sanayeh Garden in Beirut



Bright Colors

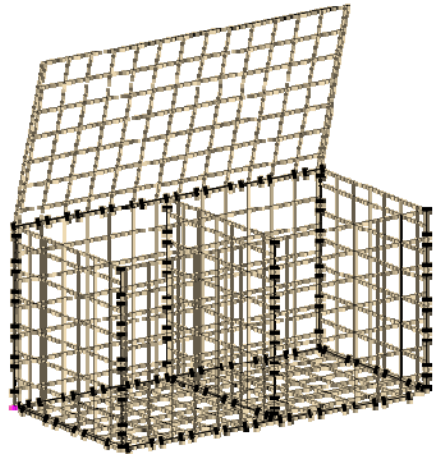
One of the most attractive pop-up elements for children is definitely the implementation of bright colors in the space.



Moveable Furniture



Trash Cans Concept



Ô-live's Hub Perspectives











Project Evolution

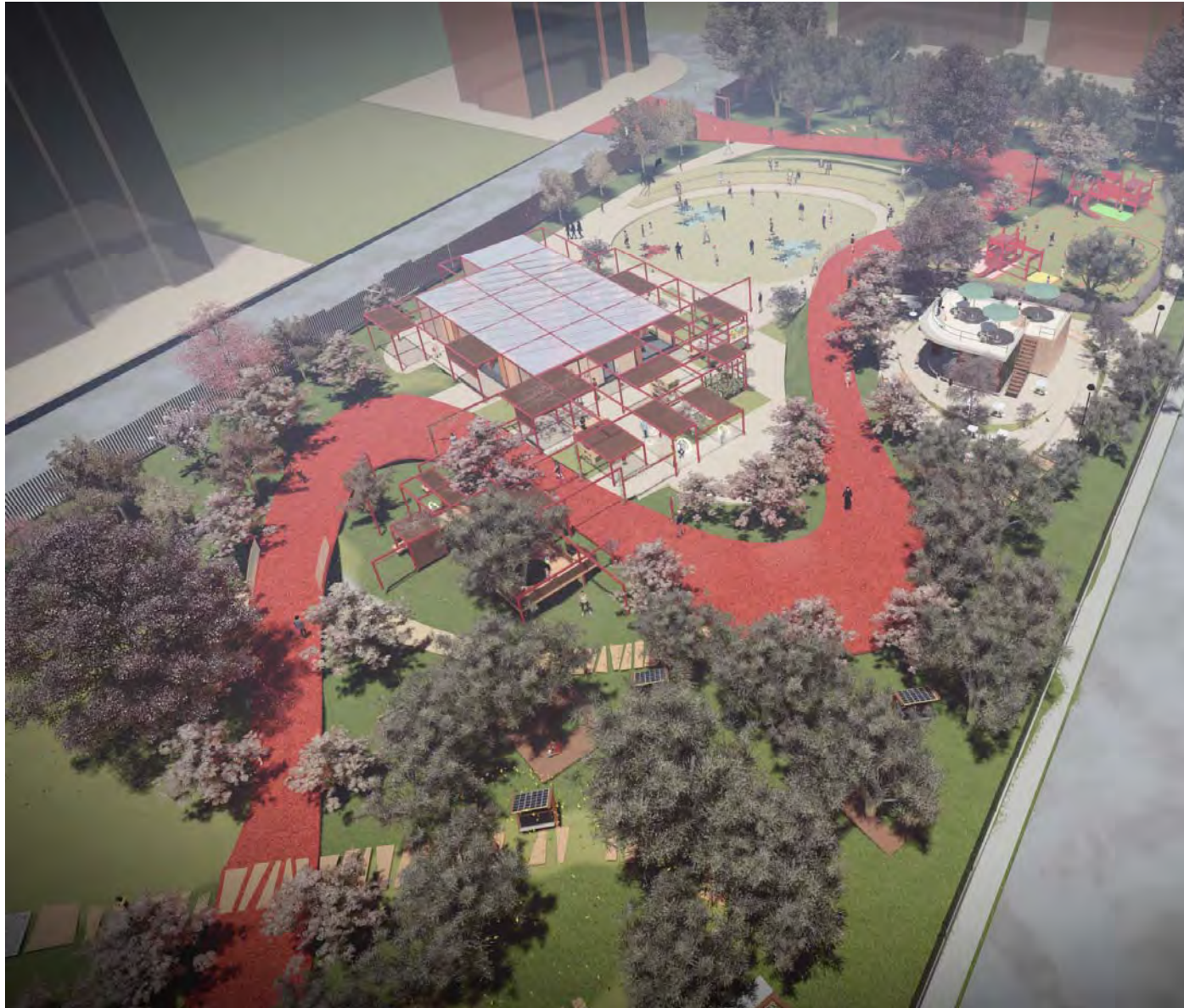
1-Building

a- Day

b-Night

2-Post-Building

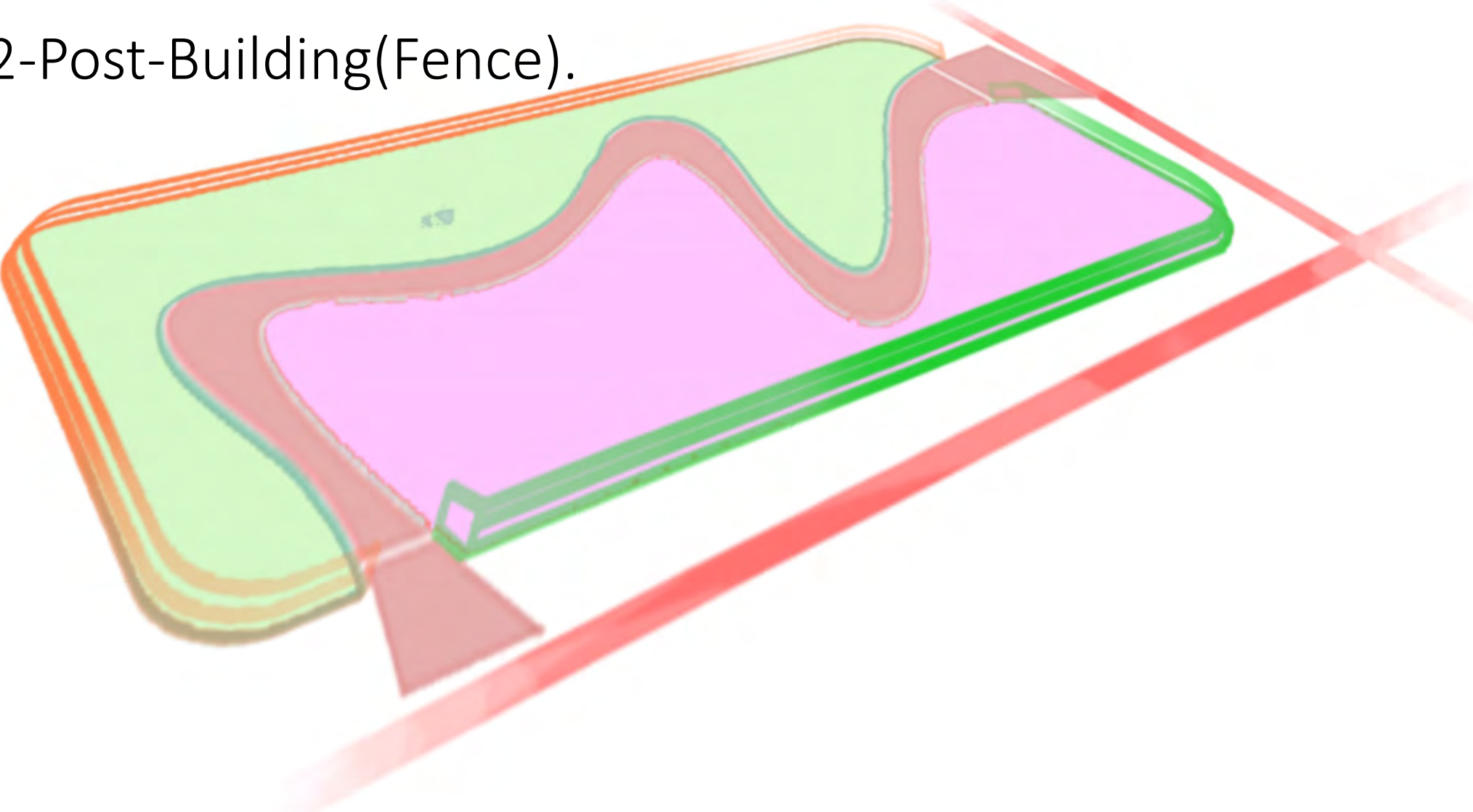
a-Day



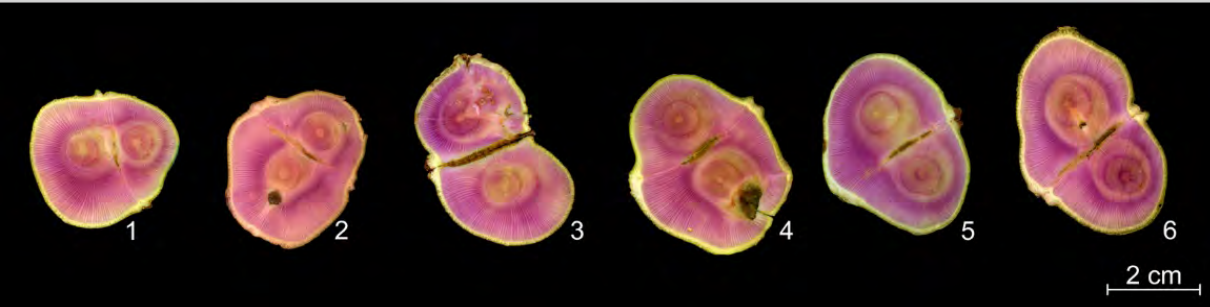
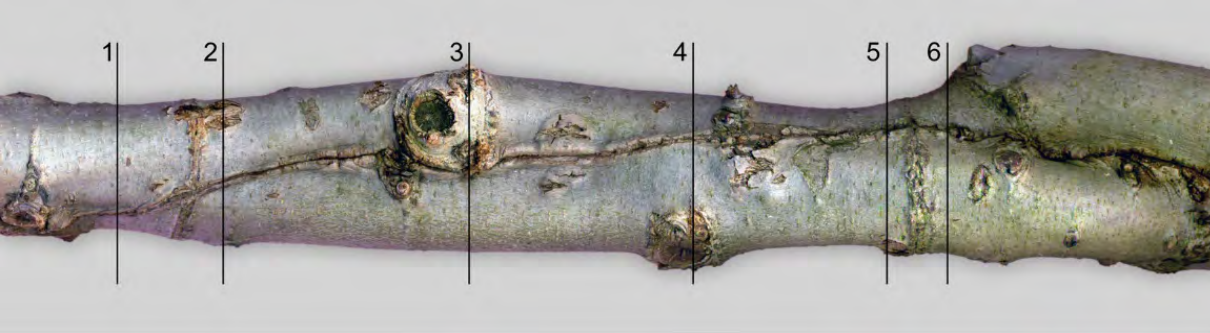
a-Night



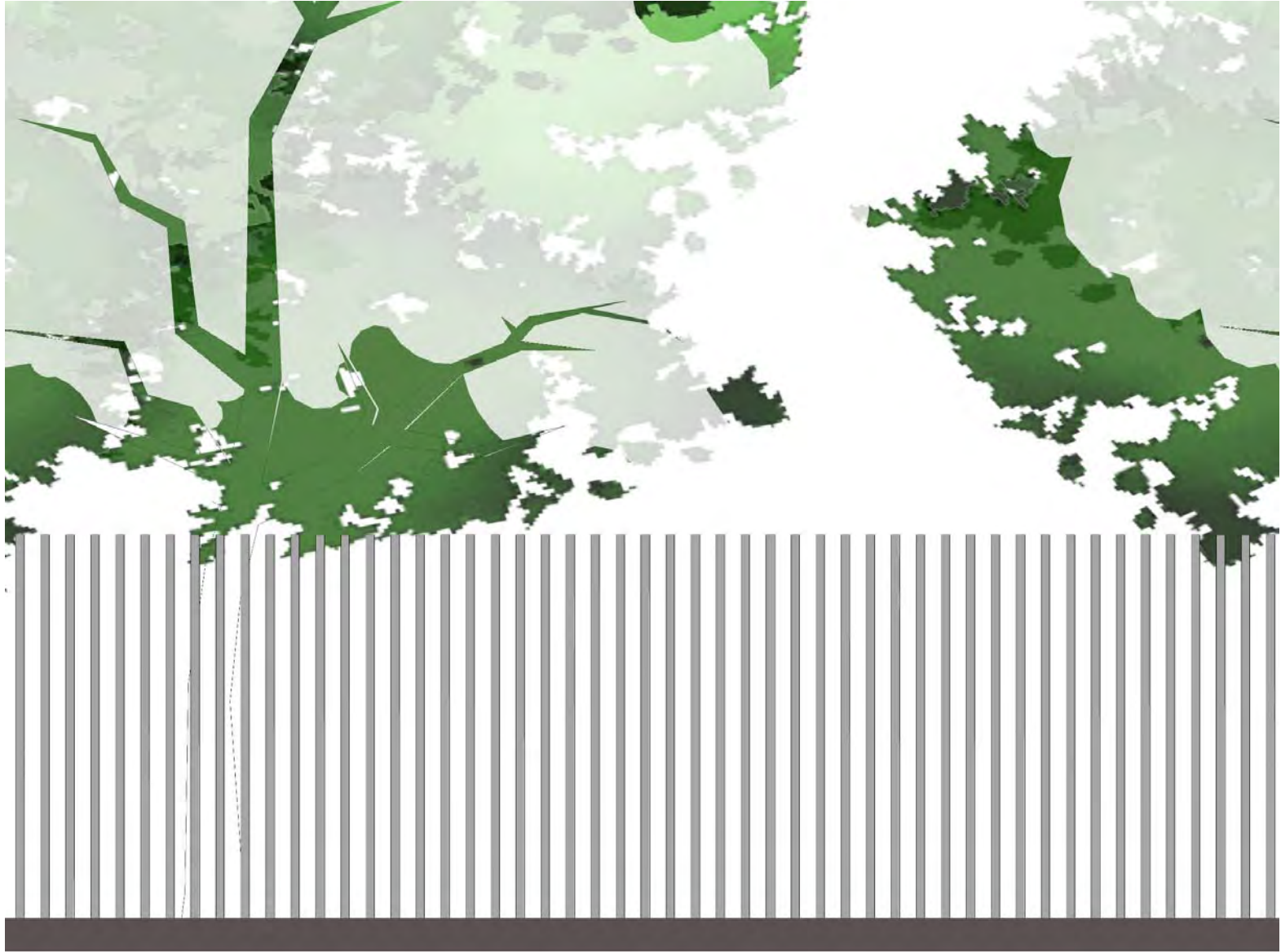
2-Post-Building(Fence).



2-Post-Building: LIVING STRUCTURES (BAUBOTANIK ARCHITECTURE)













Later we presented the project to the mayor of Tripoli who endorsed it.



As students it was a great academic experience contributing in enhancing the quality of public spaces in our own city.

Such competitions strengthen the relation between students and their city, which helps them understand the situation we are currently facing and therefore increase the sense of responsibility among youth for a better future.

THANK YOU!